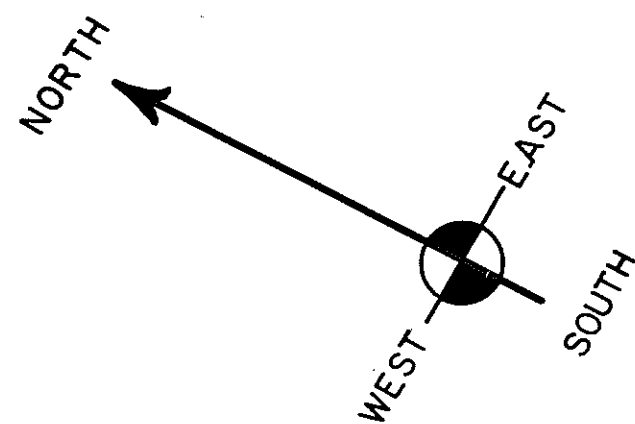


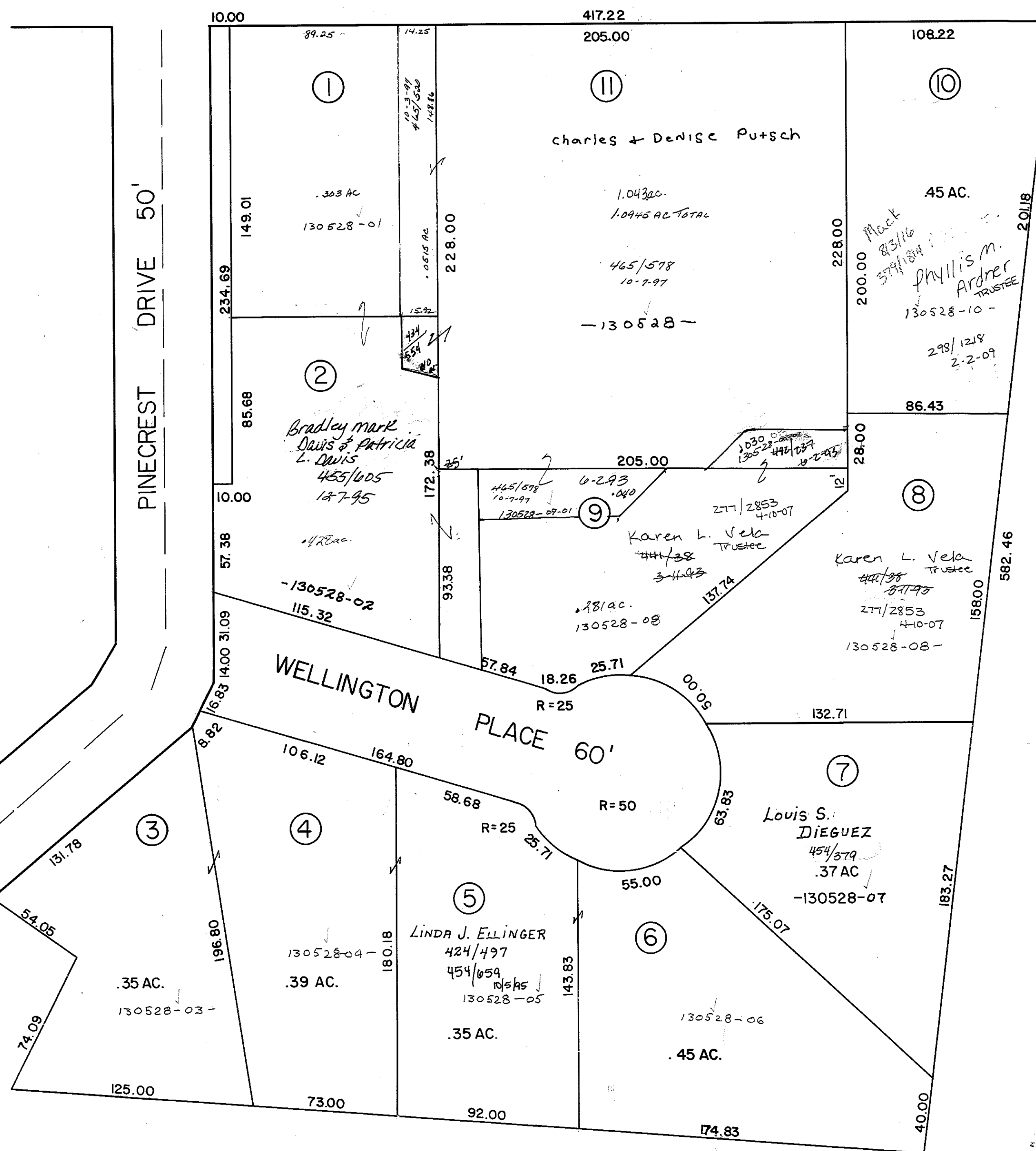
SEVILLE SOUTH SUBDIVISION

SENECA COUNTY PLAT RECORD VOLUME 9 PAGE 58

MELMORE STREET 66'



PINECREST SUBDIVISION REPLAT



(ALL LOTS OWNED BY LUKE THEIS UNLESS OTHERWISE SPECIFIED)
SCALE 1" = 40'